

SCADA System for Juneau Douglas Wastewater Plant

Sludge Incinerator Cooking Along Nicely

Juneau's sludge incinerator recently got an updated control and monitoring system from Boreal Controls Inc.

The company designed and programmed the system to replace an obsolete operator interface at the Juneau-Douglas sludge incinerator, located just south of downtown.

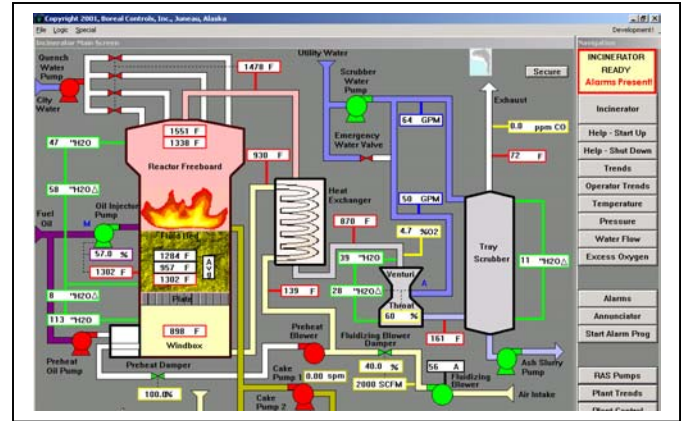
In order to provide flexibility and to avoid long-term obsolescence, the new SCADA system is based on off-the-shelf software running on standard PCs. The system consists of Wonderware for the SCADA software, two Allen-Bradley PLC 5s and two SLC 5/04 PLCs. Communications are through a DH+ network.

The new system allows plant operators to control sludge feed rates, oil injection and airflow and to log data and alarms for the incinerator. It is also capable of producing reports from logged data.

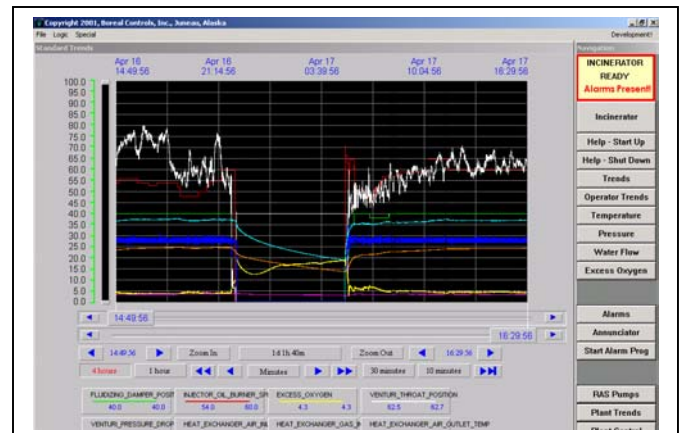
Since the initial installation several wastewater plant control modifications have been added. Return Activated Sludge pump speeds are now controlled based on plant flow. The digester level is now monitored and logged and waste sludge pumping times are controlled by the PLC and can be easily set using the SCADA system.

Chris Strickland, plant operator says, "We love it; it's increased our productivity."

He said it streamlines the process, allowing people to control the system from different locations throughout the plant. "I can turn pumps on and off from anywhere."



Juneau Douglas WWTP Incinerator Main Screen.
Juneau, Alaska



Juneau Douglas WWTP Incinerator Trend Screen.
Juneau, Alaska