

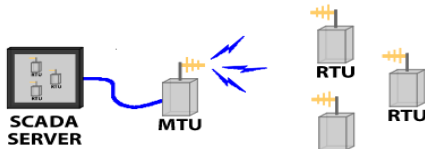
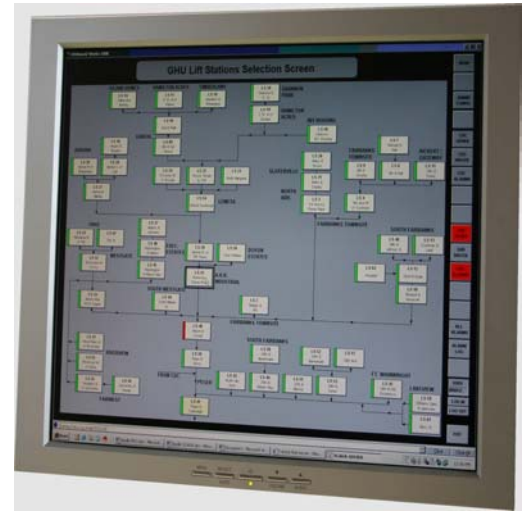


# INFINITY SCADA

The SCADA Software displays data from remote stations giving operators a new view of what is happening at the station. Subtle, long-term problems suddenly become visible. Day to day operations are enhanced by seeing the whole system at glance.

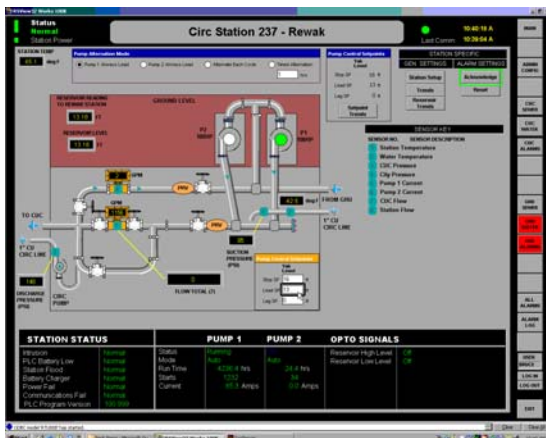
## Infinity SCADA Software

- Preconfigured to accept up to 100 stations
- Stations appear automatically as they are installed in the field
- Overview of complete system, giving quick indication of station status
- View detailed data from any station
- Easy to use, intuitive Windows interface
- Individual station screens have trends and current status
- Alarm Notification by telephone autodialer, email, or text pager
- Alarm Logging
- Data Logging of station variables, setpoints, pump data, and current user
- Uses industry standard, off-the-shelf SCADA software that allows you to modify and add custom features



## SCADA Software

The SCADA Software communicates with the MTU to graphically and numerically display data from remote stations (RTUs), giving operators a comprehensive view of each station. Stations can be completely monitored, controlled and configured through the SCADA software.



Infinity SCADA Software offers a preconfigured set of stations that allow you to view Infinity RTUs located at lift stations, water pump stations, reservoirs, etc. The flexibility of the Infinity RTU is leveraged from Infinity SCADA by allowing complete configuration from the SCADA terminal.

The Infinity SCADA is a complete package, including charting and logging of station data, alarm logging, operator login control, and alarm notification.

Best of all, this software comes configured to automatically accept new stations and is easy to understand and use.

Boreal Controls Inc.  
[www.borealcontrols.com](http://www.borealcontrols.com)  
 (907) 586-8367

